



Mac OS X Advanced System Administration v10.5

Exam 105 Q&A Version 2.75

Apple 9L0-621

Study Tips

This product will provide you Qs and answers carefully compiled and written by our experts. Try to understand the concepts behind the Qs instead of cramming the Qs. Go through the entire document at least twice so that you make sure that you are not missing anything.

Important Note: Please Read Carefully

This Real-Exams.net exam has been carefully written and compiled by Real-Exams.net experts. It is designed to help you learn the concepts behind the Qs rather than be a strict memorization tool. Repeated readings will increase your comprehension.

.We continually add to and update our exams with new Qs, so check that you have the latest version of this exam right before you take your exam.

For security purposes, each PDF file is encrypted with a unique serial number associated with your Real-Exams.net account information. In accordance with International Copyright Law, Real-Exams.net reserves the right to take legal action against you should we find copies of this PDF file has been distributed to other parties.

Please tell us what you think of our exam. We appreciate both positive and critical comments as your feedback helps us improve future versions.

We thank you for buying our product and look forward to supplying you with all your Certification training needs.

Good studying!

Real-Exams Academic Professionals and Support Team

This Study Guide and/or material is not sponsored by, endorsed by or affiliated with Microsoft, Cisco, Oracle, Citrix, CIW, Checkpoint, Novell, Sun/Solaris, CWNA, LPI, ISC, Etc. All trademarks are properties of their respective owners..

www.real-exams.net Q: 1 In an environment where a server is providing services to connected clients, which statement best defines ???utilization????

- A. The total capacity of various resources, such as CPU processor cycles, RAM, bandwidth, and storage
- B. The amount of usage of various resources, such as CPU processor cycles, RAM, bandwidth, and storage
- C. The ratio of usage to capacity of various resources, such as CPU processor cycles, RAM, bandwidth, and storage
- D. The difference between usage and capacity of various resources, such as CPU processor cycles, RAM, bandwidth, and storage

Answer: C

www.real-exams.net Q: 2 In an environment in which a server is providing services to connected clients, which statement best defines ???headroom????

- A. The total capacity of various resources, such as CPU processor cycles, RAM, bandwidth, and storage
- B. The amount of usage of various resources, such as CPU processor cycles, RAM, bandwidth, and storage
- C. The ratio of usage to capacity of various resources, such as CPU processor cycles, RAM, bandwidth, and storage
- D. The difference between usage and capacity of various resources, such as CPU processor cycles, RAM, bandwidth, and storage

Answer: D

www.real-exams.net Q: 3 Review the Xserve configuration details and specifications, then answer the question below. Xserve (Early 2008): Two 3.0 GHz Quad-Core Intel Xeon processors Three 300 GB SAS Apple Drive Modules @ 15,000 rpm Eight 4 GB 800 MHz DDR2 ECC fully-buffered DIMMs (RAM) Xserve RAID card ATI Radeon X1300 Graphics with 64 MB RAM (no PCI cards) Power Consumption Thermal Output Idle CPU Max CPU+Disk Max Idle CPU Max CPU+Disk

Max 300 W 395 W 409 W 1021 BTU/h 1344 BTU/h 1391 BTU/h What is the maximum number of Xserves, configured as described above, that can power up from a UPS with a maximum rating of 3000VA?

- A. 4
- B. 5
- C. 6
- D. 7

Answer: A

www.real-exams.net Q: 4 Which TWO tools can you use to determine the availability of services being provided by a Mac OS X Server v10.5 computer?

- A. iostat
- B. tcpdump
- C. netstat
- D. Server Admin
- E. Server Monitor
- F. serveradmin

Answer: D, F

www.real-exams.net Q: 5 You should review the contents of which TWO folders to understand the upgrade history of a Mac OS X Server v10.5 computer?

- A. /var/log/
- B. /etc/swupd/
- C. /var/db/swupd/
- D. /Library/Receipts/
- E. /System/Library/Receipts/

Answer: A, D

www.real-exams.net Q: 6 As an Apple Certified System Administrator in real-exams.net. Your company has a Mac OS X Server v10.5 computer. You get message: -bash: serversetup: command not found After running serversetup on a Mac OS X Server v10.5 computer. What is the most likely reason?

- A. Because you are not authenticated as the root user.
- B. Because Server Administration Tools package has not been installed.
- C. Because command has been removed from the system for security reasons.
- D. Because /System/Library/ServerSetup is not in your PATH environment variable.

Answer: D

www.real-exams.net Q: 7 As an Apple Certified System Administrator in real-exams.net. Your company has a Mac OS X Server v10.5 computer. How should you understand the upgrade history of a Mac OS X Server v10.5 computer?

- A. You should check the history of installation activity in the install.log file.
- B. You should check the list of applied Apple updates in the swupd.plist file.
- C. You should check the list of applied Apple updates in the swupd.conf file.
- D. You should check the contents of the /Library/Receipts/ folder to determine which Apple updates have been applied.

Answer: A, D

www.real-exams.net Q: 8 As an Apple Certified System Administrator in real-exams.net. Your company has a Mac OS X Server v10.5 computer. How to identify the configuration file that is written to when you change a setting using a GUI tool?

- A. You should use command-line tool ps
- B. You should use command-line tool otool
- C. You should use command-line tool netstat
- D. You should use command-line tool fs_usage

Answer: D

www.real-exams.net Q: 9 As an Apple Certified System Administrator in real-exams.net. Your company has a Mac OS X Server v10.5 computer. What should you do to enable IP failover in Mac OS X Server v10.5?

- A. You should type `sysctl -w net.inet.ip.redirect = 1` and press Return in Terminal.
- B. You should type `sudo serveradmin settings network:ipFailover = YES` and press Return in Terminal.
- C. You should select Network Management Server under the General tab of the Settings pane in Server Admin.
- D. You should use a text editor to add the appropriate failover commands to the `/etc/hostconfig` file on the primary and secondary servers.

Answer: D

www.real-exams.net Q: 10 As an Apple Certified System Administrator in real-exams.net. Your company has a Mac OS X Server v10.5 computer. What should you do to enhance the security of the root account on a default installation of Mac OS X Server v10.5?

- A. You should remove the root password from the System keychain in Keychain Access.
- B. You should select the root user and set the value of the AccountState key to "Inactive" in the Inspector pane in Workgroup Manager.
- C. You should choose Enable Root User, then choose Change Root Password, and set a robust password from the Edit menu in Directory Utility.
- D. You should enter the command: `dsenableroot -d`, then authenticate with your user name and password at each of the prompts in Terminal.

Answer: D

www.real-exams.net Q: 11 As an Apple Certified System Administrator in real-exams.net. Your company has a Mac OS X Server v10.5 computer. This computer receives a signal from the connected UPS device that the computer is now running on battery power due to loss of electrical power. How does the operating system respond?

- A. The operating system will run the program `/var/run/upsresponder`.
- B. The operating system will execute the script `/usr/libexec/upsshutdown`.
- C. The operating system will execute the script `/etc/mond/rules/upssignal`.
- D. The operating system will load and run the job defined in `/System/Library/LaunchDaemons/com.apple.hwmond.plist`.

Answer: B

www.real-exams.net Q: 12 As an Apple Certified System Administrator in real-exams.net. Your company has a Mac OS X Server v10.5 computer. Which command should you use to execute the contents of the file called "hello_world.sh" based on the following information? MyMac:bin apple\$ ls ?;ìCl Total 8 -rwxr??r--1 apple staff 31 Jul 29 13:00 hello_world.sh MyMac:bin apple\$ cat hello_world.sh #1 /bin/sh Echo ???hello world!???
MyMac:bin apple\$

- A. hello_world.sh
- B. ./hello_world.sh
- C. run hello_world.sh
- D. exec hello_world.sh

Answer: B

www.real-exams.net Q: 13 As an Apple Certified System Administrator in real-exams.net. Your company has a Mac OS X Server v10.5 computer. Please point out which DNS record type contains information about a machine's hardware?

- A. A
- B. AAAA
- C. CNAME
- D. HINFO

Answer: D

www.real-exams.net Q: 14 As an Apple Certified System Administrator in real-exams.net. Your company has a Mac OS X Server v10.5 computer. You plan to configure a Mac OS X Server v10.5 computer to provide mail service to the Mac OS X v10.5 client computers on your intranet. You want to generate and sign a certificate as a root authority, and use the certificate for the mail service. What is the correct order for every step?

(1).Use the openssl command in Terminal to sign the key (2).Use Server Admin to import the key and to configure the mail service to use the key. (3).On the server, use the Certificate Assistant to generate the key (4).Copy the certificate onto each client and add the certificate to the client's keychain using Keychain Access.

- A. (1).(3).(2).(4)
- B. (4).(3).(2).(1)
- C. (3).(1).(2).(4)
- D. (2).(3).(1).(4)

Answer: C

www.real-exams.net Q: 15 As an Apple Certified System Administrator in real-exams.net. Your company has a Mac OS X Server v10.5 computer. When you join an AirPort Extreme Base Station to the RADIUS service on a Mac OS X Server v10.5 computer, what role does the shared secret perform?

- A. The shared secret establishes a secure tunnel between the base station and the RADIUS server.
- B. Clients authenticate using the shared secret as their password to gain access to the base station.
- C. The shared secret generates a key that the base station uses to encrypt traffic between the RADIUS server and the base station.
- D. The key management system uses the shared secret as a token to establish trust between the RADIUS server and the base station.

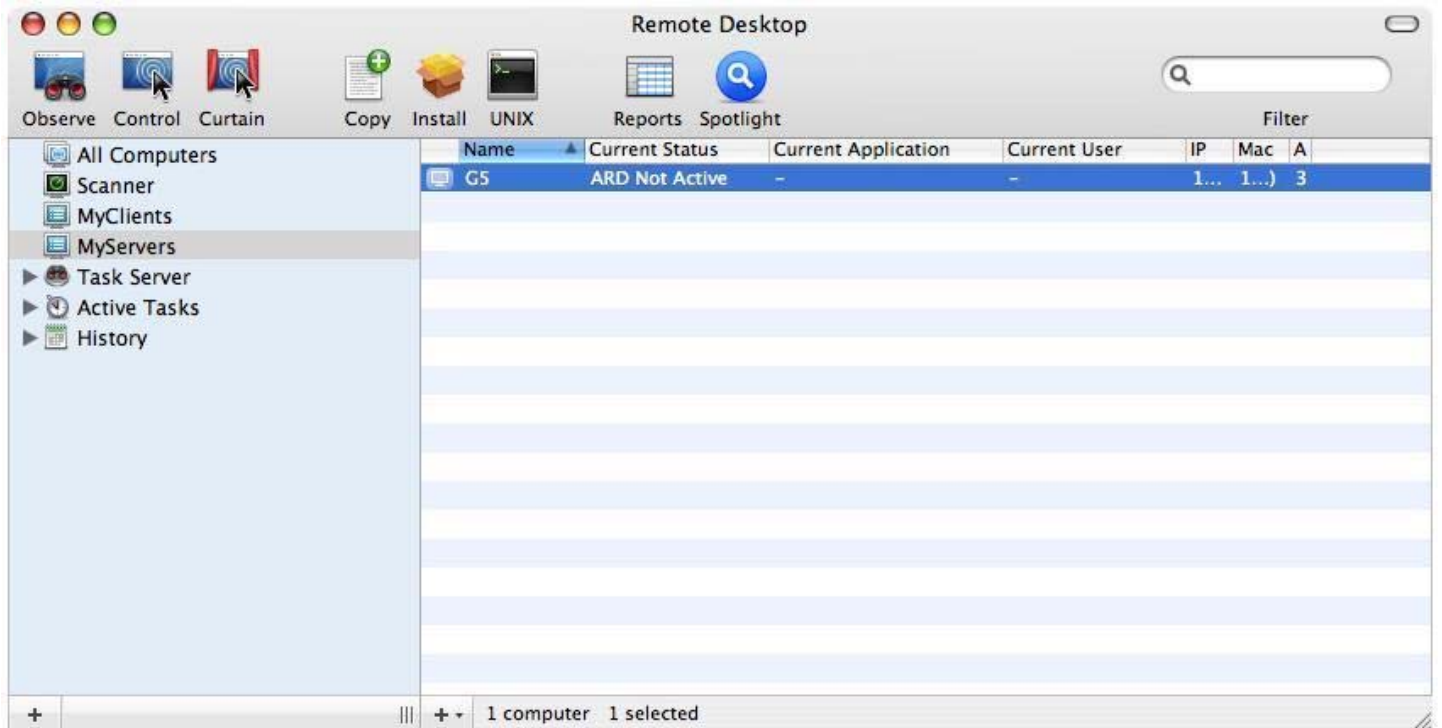
Answer: D

www.real-exams.net Q: 16 As an Apple Certified System Administrator in real-exams.net. Your company has a Mac OS X Server v10.5 computer. One way to prevent unauthorized zone transfers on your primary DNS server, is to create a _____.

- A. whitelist

Answer: A

www.real-exams.net Q: 17 As an Apple Certified System Administrator in real-exams.net. Your company has a Mac OS X Server v10.5 computer. You are using ARD on an admin computer at company headquarters to control a Mac OS X v10.5 computer at a remote office. Which procedure will activate the ARD agent on the remote computer?



- A. Choose Send Unix Command from the Manage menu in ARD, then add the command: `kickstart -restart` and click Send.
- B. Choose Change Client Settings from the Manage menu in ARD, then enable the Remote Desktop option in the Startup pane of Settings Assistant and click the Change button.
- C. In Terminal, log in to the remote computer, then type the command `sudo /System/Library/CoreServices/RemoteManagement/ARDAgent.app/Contents/Resources/kickstart -activate` and press Enter.
- D. In Terminal, log in to the remote computer, then type the commands `cd /System/Library/CoreServices/RemoteManagement/ ; mv com.apple.RemoteDesktop.plist /Library/LaunchDaemons/` and press Enter.

Answer: C

www.real-exams.net Q: 18 Which of the following are the benefits of a caching-only name server?(choose two)

- A. Reduced network overhead
- B. Reduced intrusion exposure
- C. Automatic host configuration
- D. Decreased query response time

Answer: A, D

www.real-exams.net Q: 19 Receipts are tokens that the Installer application looks for to determine if a package has been installed.

- A. TRUE
- B. FALSE

Answer: A

www.real-exams.net Q: 20 Receipts contain a checksum file that the Installer application reviews to determine whether a package's installation is authorized on a system.

- A. TRUE
- B. FALSE

Answer: B

www.real-exams.net Q: 21 Receipts contain a list of the package's contents, which the Installer application validates against a checksum stored on Apple's public Software Update servers.

- A. TRUE
- B. FALSE

Answer: B

www.real-exams.net Q: 22 Receipts verify the credentials on behalf of the user to request an SGT from the kerberized Software Update service on Apple's public Software Update servers.

- A. TRUE
- B. FALSE

Answer: B

www.real-exams.net Q: 23 As an Apple Certified System Administrator in real-exams.net. Your company has a Mac OS X Server v10.5 computer Using Server Admin on a Mac OS X Server v10.5 computer. You create and save a primary forward zone for the real-exams.net domain as shown above. Which entry is resolved as the valid service lookup for the web service by the name server of this zone based on the below information?

`;GUID=ASC42059-099F-4209-A359-2B54AA4EA05`

`??TTL 10800 pretendco.com. IN SOA ns.pretendco.com.
admin.pretendco.com. (2008052901 ;Serial 86400 ;Refresh
3600;Retry 604800 ;Expire 345600 ;Negative caching TTL)
pretendco.com. IN NS ns.pretendco.com. ns IN A 192.168.1.2
http.tcp IN PTR ._http._tcp.pretendco.com. mail IN CNAME
ns.pretendco.com. www IN CNAME ns.pretendco.com.
pretendco.com. IN MX 0 mail.pretendco.com. ._http._tcp IN SRV 0
0 80 pretendco.com. ._http._tcp IN TXT ??=/??`

- A. `._http._tcp IN TXT "=/"`
- B. `www IN CNAME ns.real-exams.net.`
- C. `._http._tcp IN SRV 0 0 80 real-exams.net.`
- D. `._http._tcp IN PTR ._http._tcp.real-exams.net.`

Answer: C

www.real-exams.net Q: 24 As an Apple Certified System Administrator in real-exams.net. Your company has a Mac OS X Server v10.5 computer. If you change the configuration of a Mac OS X Server v10.5 computer from either Standard or Workgroup to Advanced, the change will cause which THREE effects?

- A. Automatic provisioning of services for new users will not occur.
- B. All previous settings made with System Preferences will be lost.
- C. Firewall settings made with Server Preferences will be disabled.
- D. Server Admin must be used to make any post-conversion configuration changes.

Answer: A, C, D

www.real-exams.net Q: 25 As an Apple Certified System Administrator in real-exams.net. Your company has a Mac OS X Server v10.5 computer. A BIND zone file that was created by a DNS server on a non-Macintosh computer is being imported into a Mac OS X Server v10.5 computer. Which statement about the import is true?

- A. The zone file should be imported using serveradmin.
- B. Any changes made to the default named.conf file will not be reflected in Server Admin on the Mac OS X Server v10.5 computer.
- C. An include directive must be added to options.conf.apple so that the imported zone file will be accurately displayed in Server Admin on the Mac OS X Server v10.5 computer.
- D. A view directive will be added automatically to publicView.conf.apple so that the imported zone file will be accurately displayed in Server Admin on the Mac OS X Server v10.5 computer.

Answer: B

www.real-exams.net Q: 26 As an Apple Certified System Administrator in real-exams.net. Your company has a Mac OS X Server v10.5 computer. How should you do to install the DeveloperTools.mpkg at the root of a Mac OS X v10.5 volume?

- A. You should enter command `installer -pkg DeveloperTools.mpkg -volinfo /` in Terminal
- B. You should enter command `installer -package DeveloperTools.mpkg -target /` in Terminal
- C. You should enter command `installer -p DeveloperTools.mpkg -d "/Volumes/Macintosh HD"` in Terminal
- D. You should enter command `installer -pkginfo DeveloperTools.mpkg -target "/Volumes/Macintosh HD"` in Terminal

Answer: B

www.real-exams.net Q: 27 As an Apple Certified System Administrator in real-exams.net. Your company has a Mac OS X Server v10.5 computer. You use server admin to create and save a primary reverse zone for the real-exams.net domain on the 192.168.1/24 subnet. Which file contains the entry that the name server will use to resolve an IP address to a hostname in the real-exams.net domain?

- A. db.real-exams.net.zone
- B. db.real-exams.net.zone.apple
- C. db.1.168.192.in-addr.arpa.zone
- D. db.1.168.192.in-addr.arpa.zone.apple

Answer: D

www.real-exams.net Q: 28 As an Apple Certified System Administrator in real-exams.net. Your company has a Mac OS X Server v10.5 computer. Please point out which algorithm does the srm command use to erase data if no options are specified?

- A. US DoD 7-pass
- B. Gutmann 35-pass
- C. Single-pass random
- D. Overwrite (0xff, 0x00, 0xff)

Answer: B

www.real-exams.net Q: 29 As an Apple Certified System Administrator in real-exams.net. Your company has a Mac OS X Server v10.5 computer .On a Mac OS X Server v10.5 computer, how to restore the server's network settings from a file called "network.txt" in the working directory?

- A. You should use command sudo serveradmin settings -r -f network.txt
- B. You should use command sudo serversetup settings -r -f network.txt
- C. You should use command sudo serveradmin settings network < network.txt
- D. You should use command sudo serversetup settings -network > network.txt

Answer: C

www.real-exams.net Q: 30 As an Apple Certified System Administrator in real-exams.net. Your company has a Mac OS X Server v10.5 computer. Please describe what happens when you enter the text "export myvar=1234" into the default shell in Mac OS X v10.5?

- A. The variable "myvar" will be passed with a value of 1234 as an environment variable to sub-shells.
- B. The variable "myvar" will be exported with a value of 1234 to the export command's parent process.
- C. The variable "myvar" will be exported with a temporary value of 1234 as a global setting for all users on the machine.
- D. The variable "myvar" will be preserved with a permanent value of 1234 as a custom user setting, saved between login sessions in the current user's .profile file.

Answer: A

www.real-exams.net Q: 31 As an Apple Certified System Administrator in real-exams.net. Your company has a Mac OS X Server v10.5 computer .You have changed the configuration of your Mac OS X v10.5 Server computer from Workgroup to Advanced. As a result of the change, which tool can you no longer use to configure the server?

- A. Setup Assistant
- B. Server Assistant
- C. Server Preferences
- D. serversetup

Answer: D

www.real-exams.net Q: 32 As an Apple Certified System Administrator in real-exams.net. Your company has a Mac OS X Server v10.5 computer. In order to perform a valid forward lookup for a primary zone, Which DNS record should reside in a Mac OS X Server v10.5 zone file?

- A. AAAA
- B. CNAME
- C. PTR
- D. SRV

Answer: A

www.real-exams.net Q: 33 As an Apple Certified System Administrator in real-exams.net. Your company has a Mac OS X Server v10.5 computer.You are creating a launchd plist file to run on a Mac OS X v10.5 computer. Which TWO keys must you include to ensure that the job will execute successfully?

- A. Label
- B. Program
- C. Command
- D. ProgramArguments

Answer: A, D

www.real-exams.net Q: 34 As an Apple Certified System Administrator in real-exams.net. Your company has a Mac OS X Server v10.5 computer. Please describe which TWO statements describe advantageous characteristics of launchd in Mac OS X v10.5?

- A. It provides a single, standardized interface to any program that Mac OS X starts automatically.
- B. It prevents daemons from interfering with each other by arbitrating access to the Mac OS X kernel.
- C. It establishes a backward-compatible set of replacement tools for many common legacy UNIX tools on Mac OS X.
- D. It reduces the average memory footprint of the system through on-demand loading and unloading of compatible daemons.

Answer: A, D

www.real-exams.net Q: 35 As an Apple Certified System Administrator in real-exams.net. Your company has a Mac OS X Server v10.5 computer. Please point out Apple Security Update packages are signed with a message digest that is generated by which hash function?

- A. md4
- B. md5
- C. sha1
- D. shadow

Answer: C

www.real-exams.net Q: 36 As an Apple Certified System Administrator in real-exams.net. Your company has a Mac OS X Server v10.5 computer. Please point out which DNS record type maps a hostname to an IPv6 address?

- A. A
- B. AAAA
- C. CNAME
- D. HINFO

Answer: B

www.real-exams.net Q: 37 As an Apple Certified System Administrator in real-exams.net. Your company has a Mac OS X Server v10.5 computer. Please point out which daemon on a Mac OS X Server v10.5 computer schedules jobs and controls process initialization?

- A. cron
- B. launchd
- C. periodic
- D. watchdog

Answer: B

www.real-exams.net Q: 38 As an Apple Certified System Administrator in real-exams.net. Your company has a Mac OS X Server v10.5 computer. You want to scale your DNS infrastructure in Mac OS X Server v10.5 to accept more queries from more client computers. How should you do to increase DNS service performance without decreasing security?

- A. You should configure the DNS service as a caching-only name server running in stealth mode.
- B. You should establish a secondary DNS server and configure the primary DNS server to accept zone transfers only from the secondary server.
- C. You should install a second NIC in your primary DNS server, then configure DNS service to rotate requests between the two interfaces, and enable the adaptive firewall.
- D. You should divide your clients into groups, then create a computer list for each group and use Server Admin to create custom DNS zone views that forward requests based on IP address for each group.

Answer: B

www.real-exams.net Q: 39 As an Apple Certified System Administrator in real-exams.net. Your company has a Mac OS X Server v10.5 computer. You are introducing a new Mac OS X v10.5 Server computer into an existing deployment. Using Server Assistant, you begin the initial installation of Mac OS X Server v10.5 in the Workgroup configuration, but you find that a hostname has been pre-assigned to the new server, and you cannot change it. Which statement presents a likely cause of this behavior?

- A. Another host is using that hostname.
- B. The hostname has been pre-configured by an existing DNS service.
- C. Server Assistant is unable to verify the FQDN of the hostname you are trying to enter.
- D. The authentication credentials provided do not match the credentials stored in the directory server to which the new server is bound.

Answer: B

www.real-exams.net Q: 40 As an Apple Certified System Administrator in real-exams.net. Your company has a Mac OS X Server v10.5 computer. How should you do to identify the services that a Mac OS X Server v10.5 computer is providing?

- A. You should use command-line tool iostat
- B. You should use command-line tool netstat
- C. You should use command-line tool serveradmin
- D. You should use command-line tool servermonitor

Answer: C

www.real-exams.net Q: 41 As an Apple Certified System Administrator in real-exams.net. Your company has a Mac OS X Server v10.5 computer. Where should you store custom launchd plist files that will make system-wide changes to the computer where they run?

- A. You should store them in /Library/LaunchAgents/
- B. You should store them in /Library/LaunchDaemons/
- C. You should store them in /System/Library/LaunchAgents/
- D. You should store them in /System/Library/LaunchDaemons/

Answer: B

www.real-exams.net Q: 42 As an Apple Certified System Administrator in real-exams.net. Your company has a Mac OS X Server v10.5 computer. How should you do to enable automatic restart on a Mac OS X Server v10.5 computer?

- A. You should use command-line tool scutil
- B. You should use command-line tool serversetup
- C. You should use command-line tool systemsetup
- D. You should use command-line tool networksetup

Answer: C

www.real-exams.net Q: 43 As an Apple Certified System Administrator in real-exams.net. Your company has a Mac OS X Server v10.5 computer. Please point out which strategy will allow you to provide DNS services on a private network without exposing the DNS service to Internet traffic?

- A. Enable stealth mode for both UDP and TCP packets on the DNS service.
- B. Install a second NIC into the DNS server and connect the new network interface to the Internet.
- C. Enter the DNS server's IP address and domain name into the adaptive firewall's configuration file.
- D. Configure the DNS server on your private network to forward queries to a DNS server that is connected to the Internet.

Answer: D

www.real-exams.net Q: 44 As an Apple Certified System Administrator in real-exams.net. Your company has a Mac OS X Server v10.5 computer. How should you do to measure and monitor system calls on a Mac OS X Server v10.5 computer?

- A. You should use command-line tool truss
- B. You should use command-line tool dtruss
- C. You should use command-line tool dtrace
- D. You should use command-line tool ktrace

Answer: C

www.real-exams.net Q: 45 As an Apple Certified System Administrator in real-exams.net. Your company has a Mac OS X Server v10.5 computer. Please describe an important consideration related to backing up iCal data stores.

- A. The iCal service does not support WebDAV Level 2 locks.
- B. Root access is required to view or edit the principals subdirectory.
- C. Service tickets granted for iCal services become invalid when the data is restored.
- D. Extended attributes for data contained in the principals and calendars subdirectories must be preserved.

Answer: D

www.real-exams.net Q: 46 As an Apple Certified System Administrator in real-exams.net. Your company has a Mac OS X Server v10.5 computer. How should you do to gather technical details about the video display of a Macintosh computer?

- A. You should use command-line tool sysctl
- B. You should use command-line tool systemsetup
- C. You should use command-line tool system_profiler
- D. You should use command-line tool AppleSystemProfiler

Answer: C

www.real-exams.net Q: 47 As an Apple Certified System Administrator in real-exams.net. Your company has a Mac OS X Server v10.5 computer. How should you do to detect a process that is listening on the network, but is not generating any network activity?

- A. You should use command netstat -a
- B. You should use command tcpdump -X -s 0
- C. You should use command route monitor -v
- D. You should use command grep listeners /var/log/system.log

Answer: A

www.real-exams.net Q: 48 As an Apple Certified System Administrator in real-exams.net. Your company has a Mac OS X Server v10.5 computer. Please point out which TWO formats are commonly used in Mac OS X Server v10.5 for storing the keys and values in property lists?

- A. Rich Text
- B. binary XML
- C. ASCII XHTML
- D. plain-text XML

Answer: B, D

www.real-exams.net Q: 49 As an Apple Certified System Administrator in real-exams.net. Your company has a Mac OS X Server v10.5 computer. An application that you try to open quits immediately, and the last log entry for the application says, "Cannot write to file". How to identify the file mentioned in the log entry?

- A. You should use command-line tool ps
- B. You should use command-line tool lsof
- C. You should use command-line tool otool
- D. You should use command-line tool fs_usage

Answer: D

www.real-exams.net Q: 50 As an Apple Certified System Administrator in real-exams.net. Your company has a Mac OS X Server v10.5 computer. Please point out which procedure will let you send multiple commands using serveradmin?

- A. Save all the commands in a plain text file, then enter serveradmin -f <filename.txt> in Terminal.
- B. Save all the commands in a text file, then use file redirection to supply the commands as an argument to serveradmin in Terminal.
- C. Use serversetup to output the commands to a plist, then use a UNIX pipe to send the plist to the standard input of serveradmin.

D. Put all the commands with their parameters on a single line in the shell, using the characters %0A to delimit each command from the next.

Answer: B

www.real-exams.net Q: 51 You are an Apple Certified System Administrator in real-exams.net .You are installing Mac OS X Server v10.5 on a new computer. Please point out which TWO statements present valid reasons for you to choose the Advanced server configuration?

- A. You want all services to be configured automatically.
- B. You want selected services to be configured automatically.
- C. You want to configure network home folders and mobile user accounts on the new server.
- D. You want to save the setup data from this server's configuration so you can configure other servers automatically.

Answer: C, D

www.real-exams.net Q: 52 As an Apple Certified System Administrator in real-exams.net. Your company has a Mac OS X Server v10.5 computer. You manage a wiki on a Mac OS X Server v10.5 computer for a group named "Marketing". The main page for the wiki is named "home" and is stored in the default data store location for the wiki service. Where is the version history for the home page stored?

- A. In "teamservice", a MySQL database located in /Library/Collaboration/.
- B. In "teamservice", a PostgreSQL database located in /Library/Collaboration/.
- C. In the revisions.db file located in /Library/Collaboration/Groups/Marketing/wiki/home.page/.
- D. In the header of the home.html page located in /Library/Collaboration/Groups/Marketing/wiki/home.page/.

Answer: C

www.real-exams.net Q: 53 As an Apple Certified System Administrator in real-exams.net. Your company has a Mac OS X Server v10.5 computer. You have created a valid launchd plist file, "com.real-exams.myjob.plist", and stored the file in ~/Library/LaunchAgents/. Which command will allow launchd to recognize this file and begin using it?

- A. launchd load ~/Library/LaunchAgents/com.real-exams.myjob.plist
- B. launchd enable ~/Library/LaunchAgents/com.real-exams.myjob.plist
- C. launchd activate ~/Library/LaunchAgents/com.real-exams.myjob.plist
- D. launchctl load ~/Library/LaunchAgents/com.real-exams.myjob.plist

Answer: D

www.real-exams.net Q: 54 As an Apple Certified System Administrator in real-exams.net. Your company has a Mac OS X Server v10.5 computer. Please point out which command should you run on a Mac OS X Server v10.5 computer to display the computer's percentage of idle CPU processing power?

- A. top
- B. sudo serveradmin fullstatus info
- C. dtrace -m mach_kernel:ml_get_max_cpus return
- D. system_profiler SPHardwareDataType | grep "CPU"

Answer: A

www.real-exams.net Q: 55 As an Apple Certified System Administrator in real-exams.net. Your company has a Mac OS X Server v10.5 computer. Please point out where does the default data store for the iChat service reside?

- A. In the /etc/jabberd/ folder
- B. In the /Library/iChatServer/ folder
- C. In a MySQL database called jabberd2
- D. In a PostgreSQL database called jabberd

Answer: C

www.real-exams.net Q: 56 You are an Apple Certified System Administrator in real-exams.net. When a server is providing services to connected clients, the difference between network bandwidth available to the server and network bandwidth used by that server is called _____.

- A. Headroom

Answer: A

www.real-exams.net Q: 57 As an Apple Certified System Administrator in real-exams.net. Your company has a Mac OS X Server v10.5 computer. Please point out which statement presents a security concern related to installing new software and software updates?

- A. New software may contain malicious code.
- B. Retrieving new software requires the creation of SSH key pairs.

- C. The checksum algorithm that verifies the source of software updates can be spoofed easily by an experienced hacker.
- D. The daemon responsible for sending notices of software updates via system events uses an unencrypted protocol by default.

Answer: A

www.real-exams.net Q: 58 As an Apple Certified System Administrator in real-exams.net. Your company has a Mac OS X Server v10.5 computer. Please point out which information is stored in the /etc/dns/ folder on a Mac OS X Server v10.5 computer?

- A. Cache files for zone transfers
- B. Cache files for forward zones
- C. Zone files for the named process
- D. Config files that contain directives for the DNS daemon

Answer: D

www.real-exams.net Q: 59 As an Apple Certified System Administrator in real-exams.net. Your company has a Mac OS X Server v10.5 computer. You have created a script in the bash shell called MyScript.sh, and saved it in ~/Documents/Scripts/. You have verified that the script runs properly by running the command: ~/Documents/Scripts/MyScript.sh. You would like to run this script in the shell without having to type the full path name. Which strategy will allow you to accomplish this goal?

- A. Create an alias to ~/Documents/Scripts/, and put it in /usr/bin/.
- B. Create a .bash_profile file in your home directory, and add a line with the text "alias ~/Documents/Scripts/=~/usr/bin/".
- C. Run the command PATH=\$PATH:~/Documents/Scripts, then export the variable with the command export PATH=\$PATH.
- D. Declare a variable in the first line of the script that points to ~/Documents/Scripts/, then pass this variable as the first argument when you run the command.

Answer: C

www.real-exams.net Q: 60 As an Apple Certified System Administrator in real-exams.net. Your company has a Mac OS X Server v10.5 computer. You have booted a new Xserve from the Mac OS X Server v10.5 Install DVD. Which password should you use to connect remotely to the Xserve in order to install Mac OS X Server v10.5?

- A. The sequence of characters, "PASSWORD"

- B. The first eight characters of the Xserve serial number
- C. The first eight characters of the Xserve Ethernet MAC address
- D. The first eight characters of the Mac OS X Server software serial number

Answer: B

www.real-exams.net Q: 61 As an Apple Certified System Administrator in real-exams.net. Your company has a Mac OS X Server v10.5 computer. You want the launchd process on a Mac OS X v10.5 computer to run a program each time any logged-in user connects an external hard disk. You will create a plist file that will start this launchd job. Which key/value pairs should you add to the plist to accomplish your goal?

- A. Set the OnDemand key to false, and the StartInterval key to next.
- B. Set the OnDemand key to true, and the StartInterval key to true.
- C. Set the KeepAlive key to true, and the StartOnMount key to next.
- D. Set the KeepAlive key to false, and the StartOnMount key to true.

Answer: D

www.real-exams.net Q: 62 Review the screenshot of a portion of output from the serveradmin command, then answer the question below. As an Apple Certified System Administrator in real-exams.net. Your company has a Mac OS X Server v10.5 computer. You are using serveradmin to change AFP service settings interactively. How do you tell serveradmin to end the interactive session and send the command?

```
G5:~ apple$ sudo serveradmin settings
afp:activityLog = yes
afp:autoRestart = yes
afp: guestAccess = no
|
```

- A. Enter a blank line.
- B. Close the settings tag.
- C. Type end and press Return.
- D. Press Control-D to send an end-of-file character.

Answer: D

www.real-exams.net Q: 63 As an Apple Certified System Administrator in real-exams.net. Your company has a Mac OS X Server v10.5 computer. Please point out what TWO limitations should you recognize when you use syslog to review log files from a Mac OS X Server v10.5 computer?

- A. Only log files passed through syslogd can be read by syslog.
- B. Log messages sent through syslogd do not support "marker" functionality.
- C. Entries documenting logins are pruned from the log file first, due to their large numbers.
- D. Applications may bypass syslogd, and instead append custom-formatted log entries to a designated file.

Answer: A, D

www.real-exams.net Q: 64 As an Apple Certified System Administrator in real-exams.net. Your company has a Mac OS X Server v10.5 computer. Please point out which folder contains the records for a DNS zone?

- A. /etc/dns/
- B. /var/dns/
- C. /etc/named/
- D. /var/named/

Answer: D

www.real-exams.net Q: 65 As an Apple Certified System Administrator in real-exams.net. Your company has a Mac OS X Server v10.5 computer. You want to allow John Smith to monitor the AFP service on a Mac OS X Server v10.5 computer without giving him full administrative access to the server. How should you do?

- A. You should add the GroupAdministration attribute with the value "Allow" to John's user record in the Inspector pane of Workgroup Manager.
- B. From the Administrator's pane of the Access tab of Server Admin's Settings function add John's user name to the list and set the permission for his account to "Monitor".
- C. In Terminal, run visudo as root, and edit the /etc/sudoers file by adding the text "jsmith AFP=(ALL) MONITOR" in the section titled "#User privilege specification".
- D. In Terminal, enter the command `dscl -u admin /LDAPv3/127.0.0.1/mainserver.real-exams.net append /groups/com.apple.monitor_afpGroupMembership "John Smith"` and then enter the command `dscl -u admin /LDAPv3/127.0.0.1/mainserver.real-exams.net append /groups/com.apple.monitor_afpGroupMembers <John's UUID>`

Answer: B

www.real-exams.net Q: 66 You are an Apple Certified System Administrator in real-exams.net . You are using the default shell in Mac OS X Server v10.5, which command will display the list of folders that the shell searches for executable binaries?

- A. echo -path
- B. echo \$PATH
- C. which -path
- D. which \$PATH

Answer: B

www.real-exams.net Q: 67 You are an Apple Certified System Administrator in real-exams.net. You are using Server Admin on a Mac OS X Server v10.5 computer, you create and save a primary forward zone for the real-exams.net domain on the 192.168.1.2/24 subnet. Which file contains the DNS record type that maps a hostname in the real-exams.net domain to an IPv4 address?

- A. db.real-exams.net.zone
- B. db.real-exams.net.zone.apple
- C. db.1.168.192.in-addr.arpa.zone
- D. db.1.168.192.in-addr.arpa.zone.apple

Answer: B

www.real-exams.net Q: 68 You are an Apple Certified System Administrator in real-exams.net. Which DNS record must reside in a Mac OS X Server v10.5 zone file in order for you to perform a valid reverse lookup for a primary zone?

- A. A
- B. AAAA
- C. CNAME
- D. PTR

Answer: D

www.real-exams.net Q: 69 As an Apple Certified System Administrator in real-exams.net. Your company has a Mac OS X Server v10.5 computer. Please point out which statement describes best how Mac OS X v10.5 stores the default properties of installed applications?

- A. All applications' defaults are stored in a common domain as a property list containing dictionaries of keys that correspond to values representing the individual defaults.
- B. Each application's defaults are stored in a domain unique to that application, as a property list containing dictionaries of keys that correspond to values representing the individual defaults.
- C. All applications' defaults are stored in a common folder as a property list containing dictionaries of keys representing the individual defaults that reference values stored in the application's bundle.
- D. Each application's defaults are stored in a folder unique to that application, as a property list containing dictionaries of keys representing the individual defaults that reference values stored in the application's bundle.

Answer: B

www.real-exams.net Q: 70 As an Apple Certified System Administrator in real-exams.net. Your company has a Mac OS X Server v10.5 computer. Please point out which command should you run on a Mac OS X Server v10.5 computer to display the available storage space on all volumes mounted on the server?

- A. You should run the command `df -h`
- B. You should run the command `diskutil list`
- C. You should run the command `sudo du -c -h /Volumes`
- D. You should run the command `sudo diskspacemonitor check`

Answer: A

www.real-exams.net Q: 71 As an Apple Certified System Administrator in real-exams.net. Your company has a Mac OS X Server v10.5 computer. Please point out which procedure will display a list of the files that a package installer located at the root of your home directory and named "MyPackage.pkg" will install?

- A. Using a text editor, open the file titled "Info" that is located in `~/MyPackage.pkg/Contents/`.
- B. In the Software Update preferences, select the package, and click the View Installed Files button.
- C. In Terminal, type the command `softwareupdate -showfiles ~/MyPackage.pkg` and press Return.
- D. In Terminal, type the command `lsbom ~/MyPackage.pkg/Contents/Archive.bom` and press Return.

Answer: D

www.real-exams.net Q: 72 As an Apple Certified System Administrator in real-exams.net. Your company has a Mac OS X Server v10.5 computer. Please point out which TWO of these versions of Mac OS X Server can you upgrade using the Upgrade Install feature on the Mac OS X Server v10.5 Install DVD?

- A. 10.2.8
- B. 10.3.0
- C. 10.3.9
- D. 10.4.10

Answer: C, D

www.real-exams.net Q: 73 As an Apple Certified System Administrator in real-exams.net. Your company has a Mac OS X Server v10.5 computer. Please point out which command should you run on a Mac OS X Server v10.5 computer to discover how many users are connected to the server's AFP service?

- A. You should run the command `netstat -p afp`
- B. You should run the command `sudo serveradmin fullstatus afp`
- C. You should run the command `sysctl vfs.afp.client.connected_users`
- D. You should run the command `dtrace -n syscall:AppleFileServer:connectedUsers get`

Answer: B

www.real-exams.net Q: 74 As an Apple Certified System Administrator in real-exams.net. Your company has a Mac OS X Server v10.5 computer. Please point out which statement describes how the Apple System Log server processes log messages in Mac OS X Server v10.5?

- A. Log messages are accepted via `syslogd` modules, and written to a database according to a set of rules.
- B. Log messages are routed through `emond`, and written to flat files according to directives in message headers.
- C. Log messages are routed through `distnoted`, and forwarded to the ASL server according to directives in a `launchd` job for the relevant service.
- D. Log messages are cached by local service agents, and forwarded to the ASL server according to directives in a `launchd` job for the relevant service.

Answer: A

www.real-exams.net Q: 75 As an Apple Certified System Administrator in real-exams.net. Your company has a Mac OS X Server v10.5 computer. Please point out which command-line tool starts the time service processes?

- A. You should use the command-line tool `ntpd`
- B. You should use the command-line tool `nntpd`
- C. You should use the command-line tool `launchd`
- D. You should use the command-line tool `serveradmin`

Answer: C

www.real-exams.net Q: 76 As an Apple Certified System Administrator in real-exams.net. Your company has a Mac OS X Server v10.5 computer. Please point out which protocol do AirPort Extreme Base Stations use to authenticate to the RADIUS service on a Mac OS X Server v10.5 computer?

- A. EAP
- B. AEP
- C. PAM
- D. SSL

Answer: A

www.real-exams.net Q: 77 As an Apple Certified System Administrator in real-exams.net. Your company has a Mac OS X Server v10.5 computer. Please point out which command should you use to back up the server's network settings to a file called "network.txt" in the working directory?

- A. You should use the command `sudo serversetup settings -a -f network.txt`
- B. You should use the command `sudo serveradmin settings -a -f network.txt`
- C. You should use the command `sudo serversetup settings -network < network.txt`
- D. You should use the command `sudo serveradmin settings network > network.txt`

Answer: C

www.real-exams.net Q: 78 As an Apple Certified System Administrator in real-exams.net. Your company has a Mac OS X Server v10.5 computer. Please point out which command can you use to identify a computer that is booted from the Mac OS X Server v10.5 Install DVD and resides, with your computer, on the 10.10.0.0/16 network?

- A. You should use the command `/System/Library/ServerSetup/sa_schr 224.0.0.1`
- B. You should use the command `/System/Library/ServerSetup/sa_schr 224.0.0.251`
- C. You should use the command `/System/Library/ServerSetup/sa_schr 10.10.0.0`
- D. You should use the command `/System/Library/ServerSetup/sa_schr 10.10.0.0/16`

Answer: A

www.real-exams.net Q: 79 As an Apple Certified System Administrator in real-exams.net. Your company has a Mac OS X Server v10.5 computer. Please point out where does Mac OS X Server v10.5 log system messages related to Level 3 conditions in the Mail service?

```
.err;kern.;auth.notice;authpriv,remoteauth,install.none;mail.crit /dev/consol
*.notice;authpriv,remoteauth,ftp,install.none;kern.debyg;mail.crit
/var/log/system.log
#Send messages normally sent to the console also to the serial port. #To
stop messages from being sent out the serial port, comment out this line.
#*.err;kern.*;auth.notice;authpriv,remoteauth.none;mail.crit /dev/tty.serial
```

```
#The authpriv log file should be restricted access; these
#messages shouldn't go to terminals or publically-
readable #files. auth.info;authpriv.*;remoteauth.crit
/var/log/secure.log
```

```
lpr.info /var/log/lpr.log mail.crit /var log/mail.log
mail.err /var/log/mailerror.log ftp.*
/var/log/install.log install.* /var/log/install.log
install.* @127.0.0.1:32376 local0*
/var/log/appfirewall.log local1.* /var/log/ipfw.log
```

```
*.emerg * auth.info;authpriv.* @127.0.0.1:60762
```

- A. /var/log/mail.log
- B. /var/log/system.log
- C. /var/log/mailerror.log
- D. /var/log/mailaccess.log

Answer: C

www.real-exams.net Q: 80 As an Apple Certified System Administrator in real-exams.net. Your company has a Mac OS X Server v10.5 computer. Please point out which statement reflects the default SSL certificate configuration of a new installation of Mac OS X Server v10.5?

- A. Each installation of Mac OS X Server v10.5 includes a unique, self-signed SSL certificate.
- B. SSL is disabled by default, because no valid SSL certificates are installed with Mac OS X Server v10.5.
- C. All installations of Mac OS X Server v10.5 use an identical SSL certificate, signed by Apple Certificate Authority.
- D. Each installation of Mac OS X Server v10.5 includes a unique SSL certificate, signed by Apple Certificate Authority.

Answer: A

www.real-exams.net Q: 81 As an Apple Certified System Administrator in real-exams.net. Your company has a Mac OS X Server v10.5 computer. Please point out which statement presents an advantage of the DNS implementation in Mac OS X Server v10.5?

- A. It allows Server Admin to implement multiple views for domains using the views feature in BIND 9.
- B. It allows you to use the Server Admin application to edit BIND files created on non-Mac OS X systems.
- C. It automatically converts BIND files imported from non-Mac OS X systems and adds them to the view file used by Server Admin.
- D. It allows you to alter DNS configuration and zone files using command-line utilities without rendering the Server Admin application unusable.

Answer: D

www.real-exams.net Q: 82 As an Apple Certified System Administrator in real-exams.net. Your company has a Mac OS X Server v10.5 computer. Please point out when a server is providing services to connected clients, the ratio of network bandwidth used by the server to network bandwidth available to that server is called _____.

- A. Utilization

Answer: A

www.real-exams.net Q: 83 As an Apple Certified System Administrator in real-exams.net. Your company has a Mac OS X Server v10.5 computer. Please point out what is the maximum number of AirPort Base Stations that can connect to the RADIUS service on a Mac OS X Server v10.5 computer?

- A. 8
- B. 16
- C. 32
- D. 64

Answer: D

www.real-exams.net Q: 84 As an Apple Certified System Administrator in real-exams.net. Your company has a Mac OS X Server v10.5 computer. Please point out which technology implemented by Apple's Open Scripting Architecture is included with Mac OS X Server v10.5?

- A. Perl
- B. Ruby
- C. Python
- D. AppleScript

Answer: D

www.real-exams.net Q: 85 As an Apple Certified System Administrator in real-exams.net. Your company has a Mac OS X Server v10.5 computer. You are using Server Admin you can configure a Mac OS X Server v10.5 computer to send you an email notification when certain conditions occur. Which condition can trigger an email notification?

- A. A failed login attempt on the server
- B. A change in the server's Ethernet status
- C. A change in the SMART status of one of the server's hard disks
- D. The available space on one of the server's internal hard disks falls below a specified percentage

Answer: D

www.real-exams.net Q: 86 How does Mac OS X Server v10.5, in its default configuration, call the files in /etc/periodic/daily/ in order to implement daily maintenance routines?

- A. cron calls the files according to intervals specified in /etc/crontab.
- B. launchd calls the files according to intervals specified in /etc/crontab.
- C. at calls the files according to variables defined in /System/Library/LaunchDaemons/com.apple.atrun.plist.
- D. launchd calls the files according to variables defined in /System/Library/LaunchDaemons/com.apple.periodic-daily.plist.

Answer: D

www.real-exams.net Q: 87 As an Apple Certified System Administrator in real-exams.net. Your company has a Mac OS X Server v10.5 computer. You want to create a software RAID 1 on two of your Xserve's three hard drives. Which command should you use to do this?

- A. You should use the command `diskutil createRAID mirror MirrorDisk HFS+ disk1 disk2`
- B. You should use the command `diskutil partitionDisk mirror MirrorDisk HFS+ disk1 disk2`
- C. You should use the command `megaraid -create R1 -drive 1 2 -format HFS+ -volume MirrorDisk`
- D. You should use the command `megaraid -create R1 -drive 1 2 -writecache enable -readahead on -iopolicy cached`

Answer: A

www.real-exams.net Q: 88 Package installers use checksumming to validate the contents of the package against a trusted source

- A. TRUE
- B. FALSE

Answer: A

www.real-exams.net Q: 89 Package installers use checksumming to encrypt the .bom archive

- A. TRUE
- B. FALSE

Answer: B

www.real-exams.net Q: 90 Package installers use checksumming to calculate the amount of space required on the target disk for the package payload

- A. TRUE
- B. FALSE

Answer: B

www.real-exams.net Q: 91 Package installers use checksumming to enable sandboxing within the kernel of any application contained in the package installer

- A. TRUE
- B. FALSE

Answer: B

www.real-exams.net Q: 92 As an Apple Certified System Administrator in real-exams.net. Your company has a Mac OS X Server v10.5 computer. Please point out which is the default shell in Mac OS X Server v10.5?

- A. sh
- B. csh
- C. ksh
- D. bash

Answer: D

www.real-exams.net Q: 93 As an Apple Certified System Administrator in real-exams.net. Your company has a Mac OS X Server v10.5 computer. An application that you try to open quits immediately, and you suspect that its software may not have been installed properly. Which command-line tool should you use to see a list of the libraries and frameworks that the application needs in order to function properly?

- A. You should use the command-line tool grep
- B. You should use the command-line tool lsof
- C. You should use the command-line tool otool
- D. You should use the command-line tool strings

Answer: C

www.real-exams.net Q: 94 As an Apple Certified System Administrator in real-exams.net. Your company has a Mac OS X Server v10.5 computer. Please point out which process synchronizes local time services with Internet time servers?

- A. ndp
- B. ntpd
- C. nntpd
- D. timed

Answer: B

www.real-exams.net Q: 95 As an Apple Certified System Administrator in real-exams.net. Your company has a Mac OS X Server v10.5 computer. Please point out which command-line tool uses a remote-update protocol to transfer incremental changes between a file and its archive across a network connection?

- A. You should use the command-line tool rcp
- B. You should use the command-line tool asr
- C. You should use the command-line tool scp

D. You should use the command-line tool rsync

Answer: D

www.real-exams.net Q: 96 As an Apple Certified System Administrator in real-exams.net. Your company has a Mac OS X Server v10.5 computer. You have a storage device connected to a Mac OS X Server v10.5 computer. Which TWO command-line tools can you use to measure the device's total storage capacity and available space?

- A. You should use the command-line tool df
- B. You should use the command-line tool du
- C. You should use the command-line tool lsof
- D. You should use the command-line tool system_profiler

Answer: A, D

www.real-exams.net Q: 97 As an Apple Certified System Administrator in real-exams.net. Your company has a Mac OS X Server v10.5 computer. Please point out which command will enable the file "hello_world" to execute based on the following information?

```
MyMac:Scripts apple$ ls-l Total 8 -rw-r??r--1 apple
staff 31 Jul 29 13:00 hello_world MyMac:Scripts
apple$ cat hello_world #!/bin/sh echo ???Hello
World!??? MyMac:Scripts apple$
```

- A. exec hello_world
- B. chmod 777 hello_world
- C. sudo cp hello_world /usr/bin
- D. mv hello_world hello_world.sh

Answer: B

www.real-exams.net Q: 98 As an Apple Certified System Administrator in real-exams.net. Your company has a Mac OS X Server v10.5 computer. Please point out which command-line tool can you use to remotely install software on a headless server?

- A. You should use the command-line tool pkgutil

- B. You should use the command-line tool installer
- C. You should use the command-line tool serversetup
- D. You should use the command-line tool packagemaker

Answer: B

www.real-exams.net Q: 99 As an Apple Certified System Administrator in real-exams.net. Your company has a Mac OS X Server v10.5 computer. Please point out which statement presents a benefit of enabling stealth mode for the firewall service in Mac OS X Server v10.5?

- A. Clients trying to connect to closed ports will not receive failure notifications.
- B. Outgoing packets on open ports will have their IP addresses logged to the whitelist.
- C. Incoming packets on open ports will have their IP addresses logged to the whitelist.
- D. Clients connecting to established ports will have their IP addresses removed from the TCP/IP header.

Answer: A

www.real-exams.net Q: 100 As an Apple Certified System Administrator in real-exams.net. Your company has a Mac OS X Server v10.5 computer. Please point out which of dawn.local's active firewall rules has the LOWEST priority?

Server Admin:dawn.local:Firewall

SERVERS

- Available Servers
- dawn.local
 - AFP
 - DNS
 - Firewall**
 - NFS
 - Open Directory
 - RADIUS

Overview Log Active Rules Settings

Active Rules:

Priority	Packets	Bytes	Rule
00001	1	67.0 B	allow udp from any 626 to any dst-port 626
01000	1152	265.15 KB	allow ip from any to any via lo0
01010	0	0.0 B	deny ip from any to 127.0.0.0/8
01020	0	0.0 B	deny ip from 224.0.0.0/4 to any in
01030	0	0.0 B	deny tcp from any to 224.0.0.0/4 in
12300	18	1.25 KB	allow tcp from any to any established
12301	0	0.0 B	allow tcp from any to any out
12302	0	0.0 B	allow tcp from any to any dst-port 22
12302	0	0.0 B	allow udp from any to any dst-port 22
12303	34	3.19 KB	allow udp from any to any out keep-state
12304	0	0.0 B	allow udp from any to any in frag
12305	0	0.0 B	allow tcp from any to any dst-port 311
12306	0	0.0 B	allow tcp from any to any dst-port 625
12307	0	0.0 B	allow udp from any to any dst-port 626
12308	0	0.0 B	allow icmp from any to any icmptypes 8
12309	0	0.0 B	allow icmp from any to any icmptypes 0
12310	0	0.0 B	allow igmp from any to any
12311	0	0.0 B	allow tcp from 192.168.0.0/16 to any dst-port 22
12311	0	0.0 B	allow udp from 192.168.0.0/16 to any dst-port 22
12312	0	0.0 B	allow tcp from 192.168.0.0/16 to any dst-port 3283,5900
12312	0	0.0 B	allow udp from 192.168.0.0/16 to any dst-port 3283,5900
12313	2	128.0 B	allow tcp from 192.168.0.0/16 to any dst-port 548
65534	51	6.42 KB	deny ip from any to any
65535	0	0.0 B	allow ip from any to any
12303	1	76.0 B	(4s) STATE udp 192.168.100.18 123 <-> 17.254.0.31 123

Last updated: Sunday, April 20, 2008 5:16:44 PM America/New_York

+, , , Stop Firewall

- A. 00001
- B. 65534
- C. 65535
- D. 12303

Answer: D

www.real-exams.net Q: 101 Which strategy can prevent DNS service outages due to query overload?

- A. Reduce the time interval specified for the cache-flushing variable in the DNS service's primary configuration file.
- B. Configure a secondary DNS server and place the IP address for the new server in the lookup tables of all client machines.
- C. Install an additional NIC in the DNS server and modify the BIND configuration to rotate queries between all network interfaces.
- D. Restrict access to DNS service by creating a Service ACL that causes your DNS server(s) to ignore queries from IP addresses in the blacklist.

Answer: B

www.real-exams.net Q: 102 Which TWO command-line tools are helpful if you need to troubleshoot a reverse lookup for a primary zone?

- A. dig
- B. dscl
- C. host
- D. netstat
- E. tcpdump

Answer: A, C

www.real-exams.net Q: 103 Which procedure should an administrator perform to prevent specific users from increasing their privileges when using the Terminal application to run restricted programs?

- A. Using a text editor, edit the /etc/authorizations file to restrict those users' access.
- B. Using Workgroup Manager, manage Terminal preferences to restrict those users' access.
- C. Using visudo as root, add entries to the ???User privileges??? section of the /etc/sudoers file to restrict those users' access.

D. Create a file system ACL on the directory that contains the programs whose use you want to restrict, and exclude those users from the ACL group assigned to that folder.

Answer: C

www.real-exams.net Q: 104 In Mac OS X Server v10.5 , which command-line tool can you use to check a property list file for syntax errors?

- A. plutil
- B. defaults
- C. pmap_set
- D. pmap_dump
- E. PlistBuddy

Answer: A

www.real-exams.net Q: 105 In Mac OS X v10.5, which TWO tools can you use to take screenshots?

- A. Grab
- B. plutil
- C. System Profiler
- D. systemsetup
- E. screencapture
- F. system_profiler

Answer: A, E